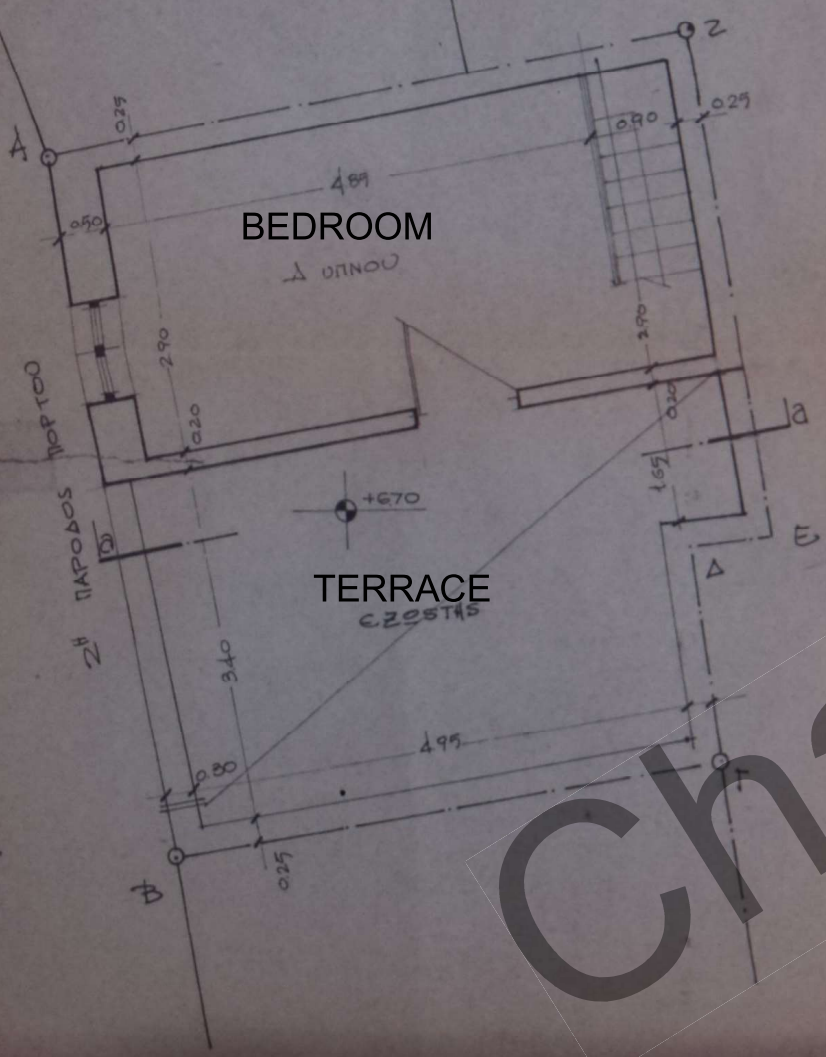


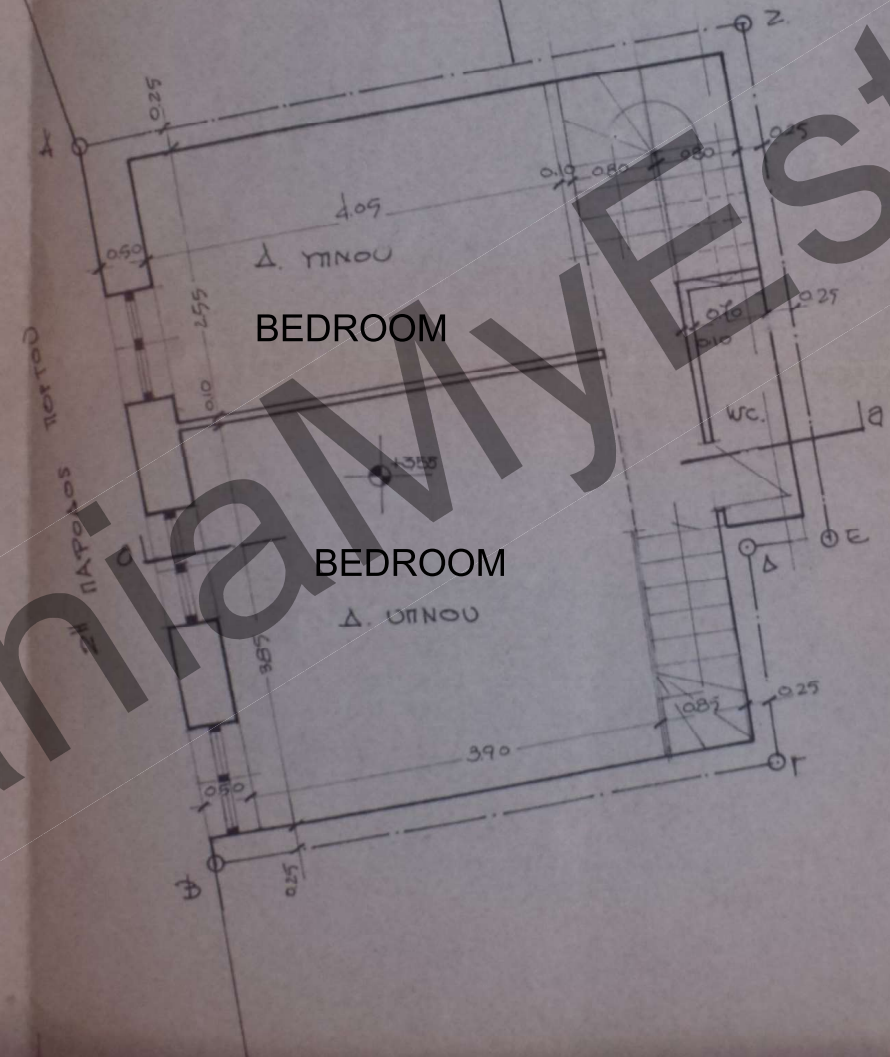
ΚΑΤΟΨΗ Β' ΟΡΟΦΟΥ
 Εμβαδού: $0,90 \times (6,90 + 6,40) \times 3,89 = 21,61 \text{ M}^2$
 Ογκός:

SECOND FLOOR PLAN
 21.61sqm



ΚΑΤΟΨΗ Α' ΟΡΟΦΟΥ
 Εμβαδού: $0,90 \times 48,67 = 43,80 \text{ M}^2$
 Ογκός:

FIRST FLOOR PLAN
 43.57



ΚΑΤΟΨΗ ΙΣΟΓΕΙΟΥ
 Εμβαδού: $0,90 \times 48,67 = 43,80 \text{ M}^2$
 Ογκός:

ΚΑΤΟΨΗ
 ΑΥΞΑΝΤΙΚΟ

GROUND FLOOR PLAN
 43.37sqm

